



About Joylive

Company Summary

The Joylive Elevator is a famous provider of elevators, escalators, and related services. It was founded in Kunshan city (60km to Shanghai) in 2002. Its innovative and environmentally-friendly access and transit management systems make an important contribution to mobility in urban societies. Joylive is building a world that's safer, more comfortable and energy efficient, more innovative and productive!



Company Facts

Founded:

2002, in the city of Kunshan-Suzhou City, Jiangsu province, China.

Headquarters:

No. 615, West Junziting Road, Kunshan City, China.

Activities:

Jolive develops, manufactures, installs, maintains (services) and modernizes elevators, escalators and moving walks for all kinds of buildings, e.g. from train stations and hospitals to commercial and residential buildings.

Locations:

A network of more than 100 agents in over 100 countries.

Manufacturing site:

No. 322, Maoxu Road, Bacheng Town, Kunshan-Suzhou City, China

Production Capacity:

18, 000 units (elevators and escalators)

Revenue:

Group revenue was USD 8.6 million in 2021.

Employees:

550 (Feb. 2021)

About Joylive

The Joylive Elevator is a famous provider of elevators, escalators, and related services. Its innovative and environmentally-friendly access and transit management systems make an important contribution to mobility in urban societies. Joylive is building a world that's safer, more comfortable and energy efficient, more innovative and productive!

Joylive Elevator has been continually introducing advanced technology and advocating self-dependent innovation, implementing green energy saving and humanized ideas of products design. Our diversified and personalized products includes passenger elevator, hospital elevator, villa elevator, hydraulic elevator, freight elevator, panoramic elevator, car elevator, escalator, moving walk, special elevator etc.

Joylive has participated in over 1000 transportation projects in 800 cities and is playing an important role in servicing China's urbanization process. Product and service networks have covered more than 100 countries and regions, including Southeast Asia, the Middle East, Australia, New Zealand, Africa etc.

For more information about Joylive, please visit the company's Website at www.joylive.com.



Product Lines

Joylive's product portfolio is set up to provide an optimal mobility solution for modern buildings and urban environments such as residential properties, offices, airports, hospitals, hotels, CBD, and malls & retail projects.



Joycity Business elevator /escalator

For luxury residential building, shopping center /CBD/hotels, commercial and high- end residential buildings allowing flexible combination of system layout, car dimensions and car interior design.



Joylife Residential passenger elevator

Simple and practical for smaller residential buildings. MRL solution that meets the essential requirements in terms of performance, design and other options.

Joyvilla Villa elevator, custom-made

Provide directional villa elevator custom service for top luxury market. Offers a certain design and dimensioning flexibility, providing green mobility, smart operations and space efficiency.



Joylogi Logistics freight elevator

Robust and reliable freight elevator available for all purposes that require to transport heavy goods and / or large groups of passengers. Connect service and enterprise; helping industry customers to solve problems including cargo handling, storage.



Customer Services & Technologies

Joylive customer services & technologies reflect the company's pioneering spirit and ambition to improve urban mobility with innovations.

JOYCloud IOT (Internet of Thing)

In 2015, Joylive launched the Elevator IOT system, JOYCloud 1.0, with function of elevator remote monitoring, 3G/4G/WIFI supporting, online debugging, troubleshooting and remote upgrade; this unique system was followed in 2016 by JOYCloud 2.0 – a second-generation IOT management system that has been used in the market thousands of times. A decisive factor behind this breakthrough is the product's new algorithm combined with a state-of-the-art control system.



Intelligent manufacturing

In 2016, Intelligent manufacturing center of 3rd phase factory with 70, 000m2 was put into operation, with the help of ABB new generation industrial robots, Joylive can manufacture elevators that are safer, more affordable, easier to deploy and reconfigure.

For country specific service details, please contact your Joylive consultant or visit the Joylive website: www.Joylive.com

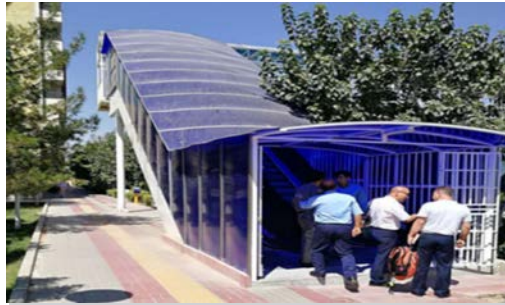


Reference Buildings

Joylive is providing landmark buildings around the world with its best products and is maintaining them in top condition. Whether installed in a small two-story commercial building or in a skyscraper in a major city, Joylive elevator and escalator, modernization, industry leading destination control and maintenance solutions are unsurpassed.



Desa Hill Villa Area (Malaysia 426 units)



Iran Corridor Escalator (Iran 143 units)



Lake Town Apart, Almaty (Kazakhstan 18 units)



European University of Bangladesh (EUB) – 34 units



Crimean Clinical Hospital (Russia 14 units)



Crowne Plaza Hotel (New Zealand 5 units)



Korba Heights (Egypt 12 units)



WISTRON INFOCOMM (Vietnam 36 units)



Agung Sedayu (Indonesia 13 units)



Royal Swiss Lahore (Pakistan 11 units)



City Park Yaroslavl (Russia 18 units)



Beneficencia Del Valle (Colombia 6 units)



International Media Production Zone (Dubai 12 units)



Government affordable houses (Uzbekistan 689 units)



Residential complex (Singapore 23 units)

Certificate & Honors

Joylive is applying and got certificates to meet various requirements and standard of different countries to expand our business globally.



History

In its 20-year history, Joylive has grown from a local manufacturer of machines into a global elevator and escalator business. On the way, it has shaped the industry, defined best practice as a mobility provider and as an employer, and prospered in a highly competitive global environment.

Historic Milestones

- 2002
Establishment of the company – Suzhou Great Elevator Co., Ltd.
- 2003
The first phase factory was constructed and put into operation.
- 2004
Acquisition of manufacturing license of special equipment for elevator.
- 2005
Launch of Joylive 3200 machine-room-less passenger elevator.
- 2006
Presentation of seven new elevator product lines.
- 2008
Acquisition of “Suzhou Famous Brand”
- 2009
The second phase factory of 35, 000 m2 was established and start production.
- 2010
Company Technology Center was put into use.
- 2011
Evaluated as “New High-tech enterprise in Suzhou”

- 2012
Acquisition of “Famous Trademark in Jiangsu province”
- 2013
Acquisition of “Famous Trademark in Suzhou City”
- 2013
Awarded as the Scientific and Technological enterprise
- 2013
The third phase factory of 70, 000 m2 was started construction.
- 2013
Establish university-enterprise cooperation with National University of Singapore
- 2013
Expansion to overseas markets.
- 2015
Joy Cloud platform was launched for solution of IOT (Internet of Thing).
- 2015
Establishment of Joylive Elevator Corporation.
- 2015
Joylive was listed on stock market (Stock Code: 833481)
- 2015
Awarded as the 10 Best Safety Production Enterprise.
- 2016
Intelligent manufacturing center was put into operation
- 2017
Rated as Jiangsu demonstration intelligent workshop
- 2018
Awarded the title of “Jiangsu Famous Brand Product”
- 2019
Rated as industrial Internet development demonstration enterprise and national two integration management system standard of implementation pilot company

For more information, please visit <http://www.joylive.com>



Contacts

For more information please contact

Joylive Elevator Co., Ltd.

Tel: +86 512 57806555

Fax: +86 512 57899222

Mob: +86 15618725928

Email: sales@joylive.com
joylive.lift@gmail.com

www.joylive.com



Wechat Accounts